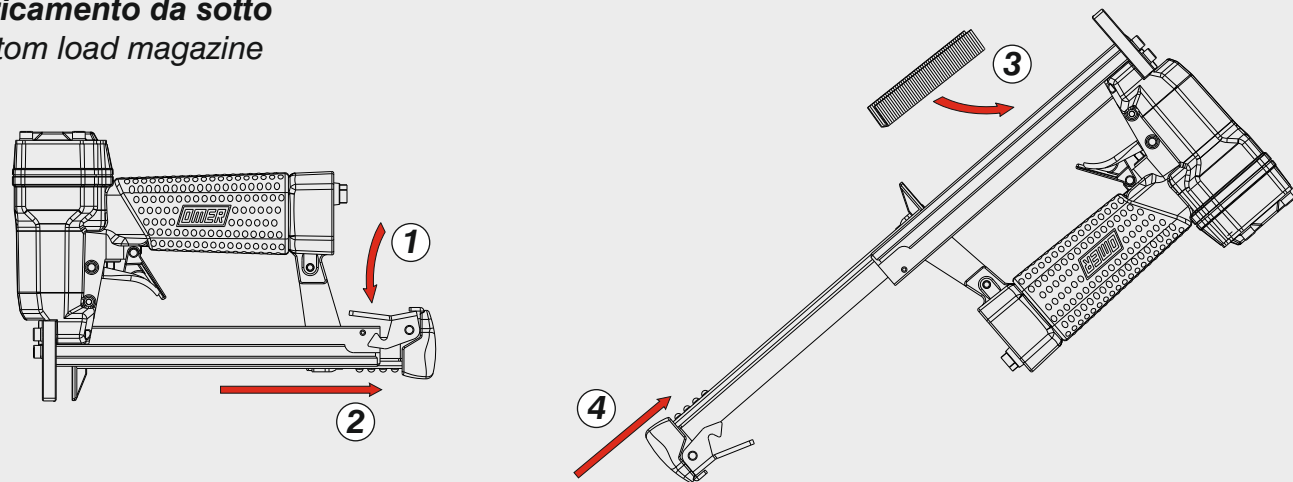
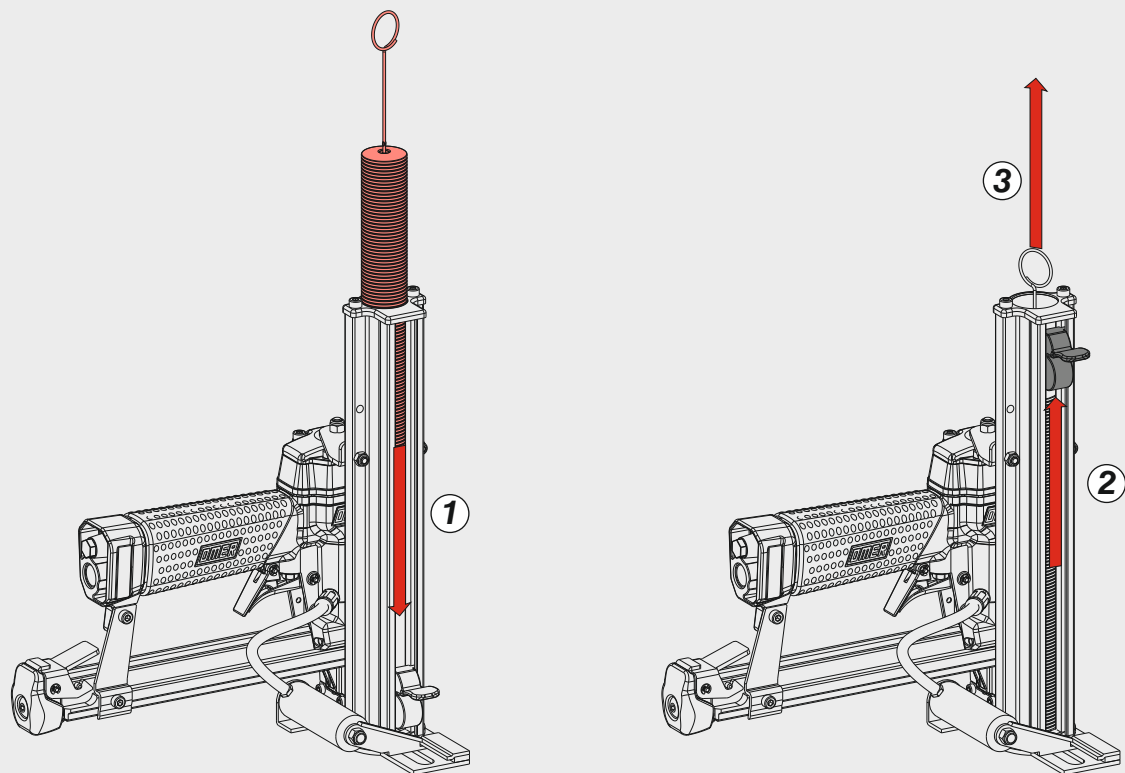


Caricamento graffe - Staples loading

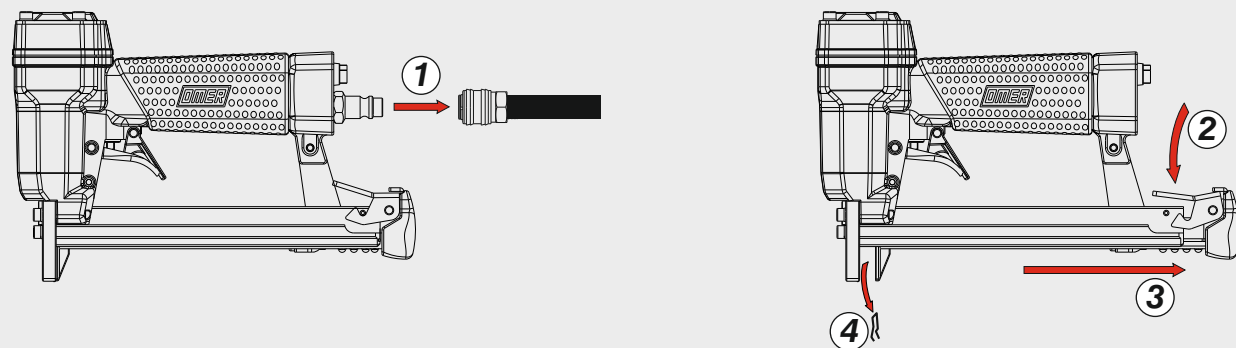
Caricamento da sotto  
Bottom load magazine



Caricamento dischi - Disk loading



Disinceppamento - Jam clearing



Manuale d'uso, manutenzione e parti di ricambio  
Use, maintenance and spare parts manual  
Gebrauchsanweisung, Instandhaltungsrichtlinien und Ersatzteile  
Manuel d'utilisation, entretien et pièces de rechange  
Manual de uso, mantenimiento y repuestos  
Εγχειρίδιο χρήσης, συντήρησης και ανταλλακτικών  
Manual de utilização, manutenção e partes sobresselentes  
Handleiding voor gebruik, onderhoud en wisselstukken  
Brugsanvisning, vedligeholdelse og reservedelsliste

Parte 2  
Part 2  
Teil 2  
Partie 2  
Part 2  
2° Μερὸς  
Parte 2  
Deel 2  
Del 2



80.16 DK

cod. 1156000DK

1156000DK\_8016DK\_5 200320 FL



Dati tecnici

Technical data  
Technische daten

Données techniques

Datos técnicos  
Τεχνικά χαρακτηριστικά

Dados técnicos

Technische gegevens  
Tekniske data

Misure impieghiabili mm

Usable lengths mm  
Gebrauchliche Längen mm

Mesures utilisables mm

Medidas que se pueden emplear mm  
Διαστάσεις σε μμ

Medidas que se podem utilizar mm

Te gebruiken engtes in mm  
Brugbare længder i mm

10 ÷ 16

Capacità caricatore n° punti

Magazine capacity No. of fasteners  
Magazinkapazität Nägel

Capacité chargeur n° de points

Capacidad cargador n° puntos  
Δυνατότητα γεμιστέρα, σπονδετέρω

Capacidade carregador n° pontos

Capaciteit magazijn in aantal spijkers  
Kapacitet af magasin antal klemme

145

&

(100 disk)

Pressione d'esercizio

Working pressure  
Betriebsdruck

Pression de fonctionnement

Presión de trabajo  
Πίεση λειτουργίας ατμ.

Pressao de trabalho

Werkdruk  
Arbejds tryk bar

5 ÷ 6,5 bar

70 ÷ 95 psi

Consumo aria litri/colpo

Air consumption litres/shot  
Luftverbrauch Liter/Schlag

Consommation air litre/coup

Consumo aire-litros/golpe  
Καταναλοση αερα λ/ξτῶπημα

Consumo ar litro/golpe

Luchtverbruik liter/schot  
Luftforbrug liter/skud

0,18

Peso kg

Weight kg  
Gewicht kg

Poids kg

Peso kg  
Βαρος κγ

Peso kg

Gewicht in kg  
Vægt kg

1,60

Dimensioni (AxBxH) mm

Dimensions mm  
Größe mm

Dimension mm

Dimensiones mm  
Δυνατότητα γεμιστέρα, σπονδετέρω

Dimencoes mm

Afmetingen in mm  
Dimensioner mm

223x128x265

EN 12549 :1999 ISO 11201 :1995

Pressione sonora in pos. operatore

Sound pressure at the workstation  
Lärmintensität am Arbeitsplatz

Pression acoustique près de l'opérateur

Presión sonora en posición encargado  
Ακουστική πίεση στη θέση χειριστού

Intensidade sonora perto do operador

Geluidssterkte op de werkplek  
Lydstyrke på operatorposten

84,3 dB(A)

EN 12549 :1999 ISO 3744 :1994

Potenza sonora emessa

Emitted sound power  
Ausgestrahlte Lärmintensität

Puissance acoustique émise

Potencia sonora emitida  
Ακουστική ισχύς

Potência sonora emitida

Uitgestraalde geluidssterkte  
Udsendt lydstryrke

93,7 dB(A)

EN 28662 :1992 ISO 5349 :1986 ISO 8662 -11

Valore medio ponderato di vibrazione sull'impugnatura

Weighted mean value of vibration on the grip  
Mitteler Vibrationswert, am Griff gemessen

Valeur moyenne pondérée de vibration mesurée sur la poignée

Valor medio ponderado de vibracion medida en la empuñadura  
Μέσος ορος μετρήσης κραδασμών στη χειρολαβή

Valor medio ponderado de vibracao medida no punho

Gewogen gemiddelde vibratiewaarde  
Middelvaerdi af vibrationer på handtaget

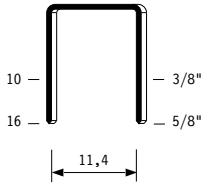
<2,5 m/s²

Tipo di punto

Type of fastener  
Befestigungselement  
Type d'agrafe  
Tipo de punto  
Τύπος καρφιού  
Tipo de ponto  
Type nietjes  
Tilspændingstype

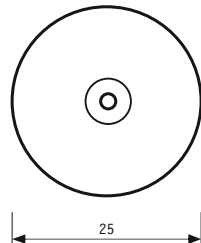
80

0,65x0,95

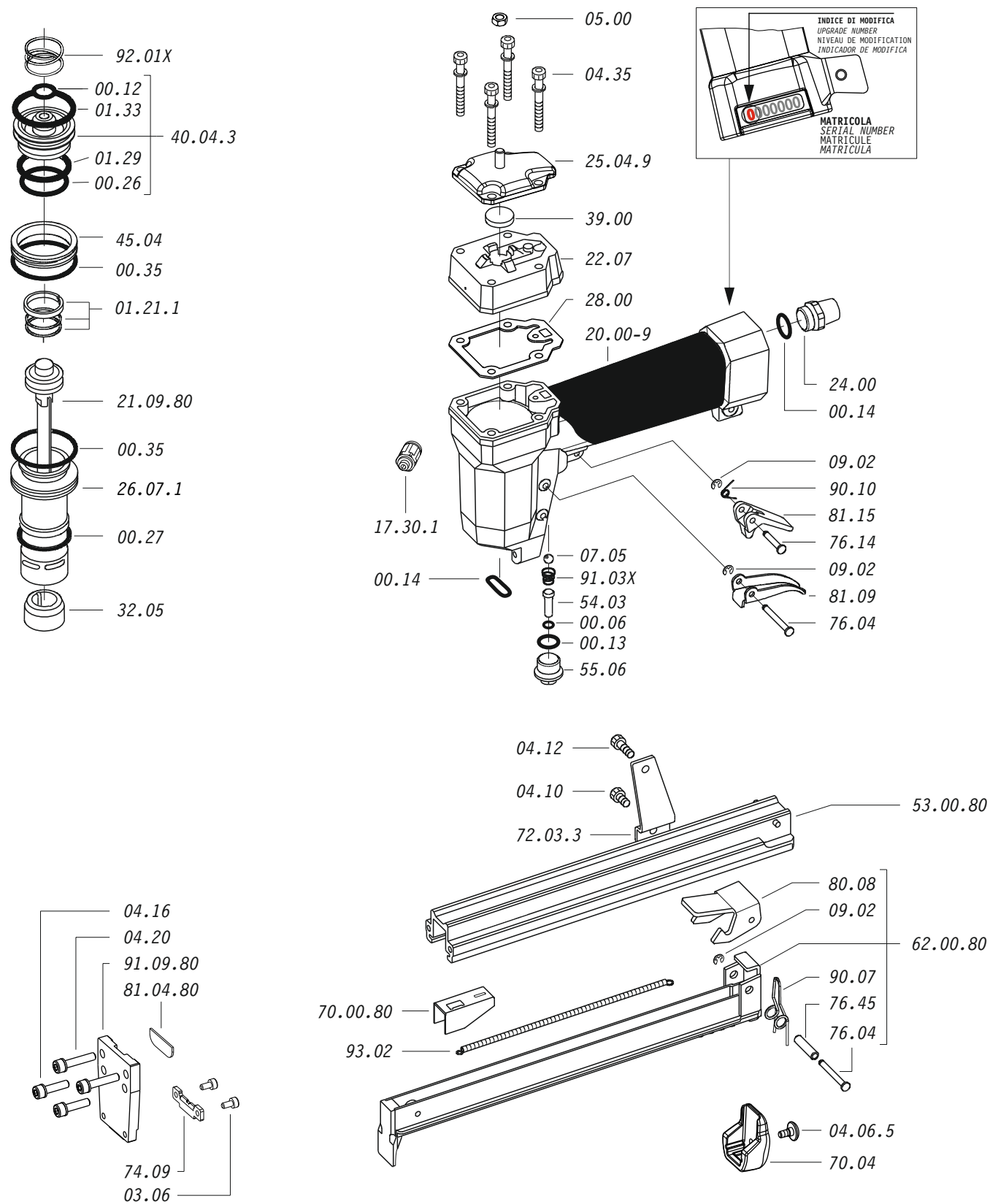


Crown: .500" (1/2")  
Gauge: 21

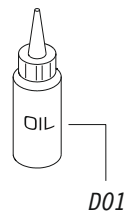
DK25



Parti di ricambio - Spare parts - Ersatzteile - Pièces de rechange - Piezas de repuesto  
Ανταλλακτικά - Partes sobresselentes - Wisselstukken - Reservedele



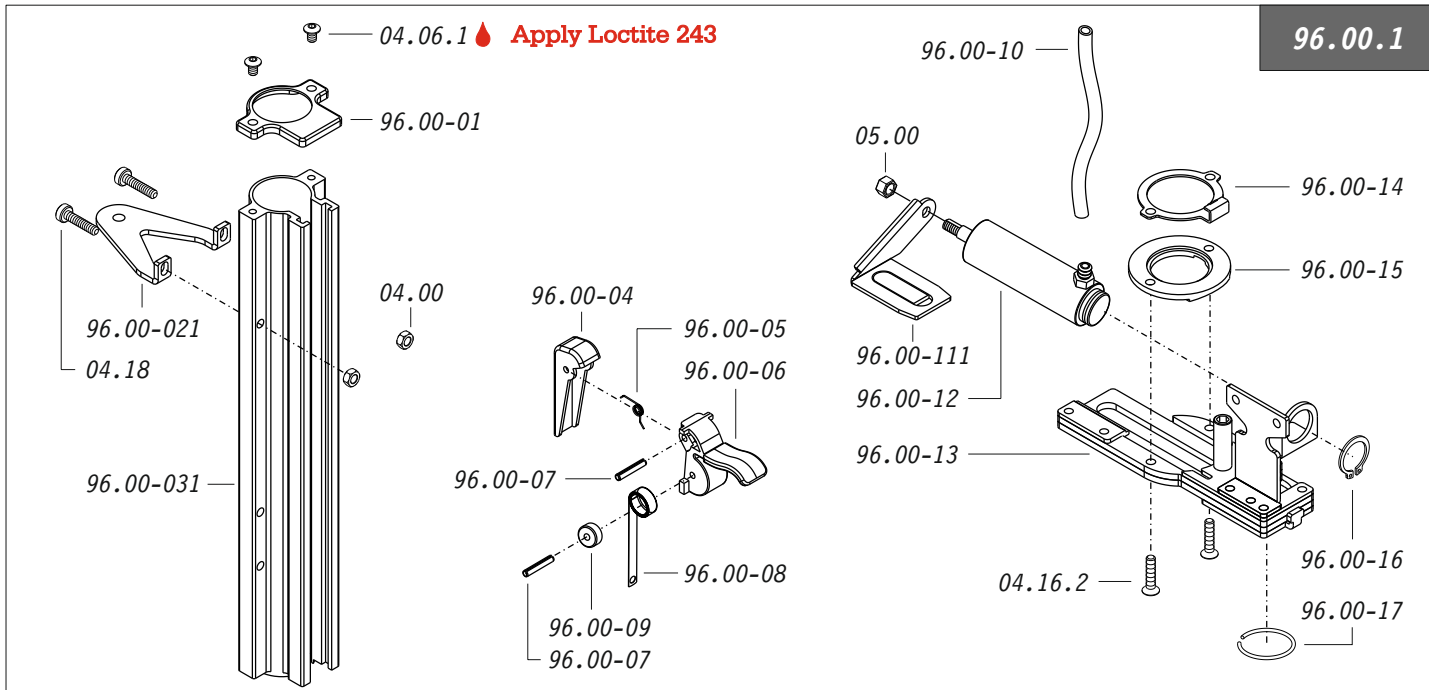
Dotazioni - Equipment - Ausrüstung - Équipements - Equipamiento - Παρεχόμενα  
Equipamento - Uitrusting - Udstyr



80.16 DK

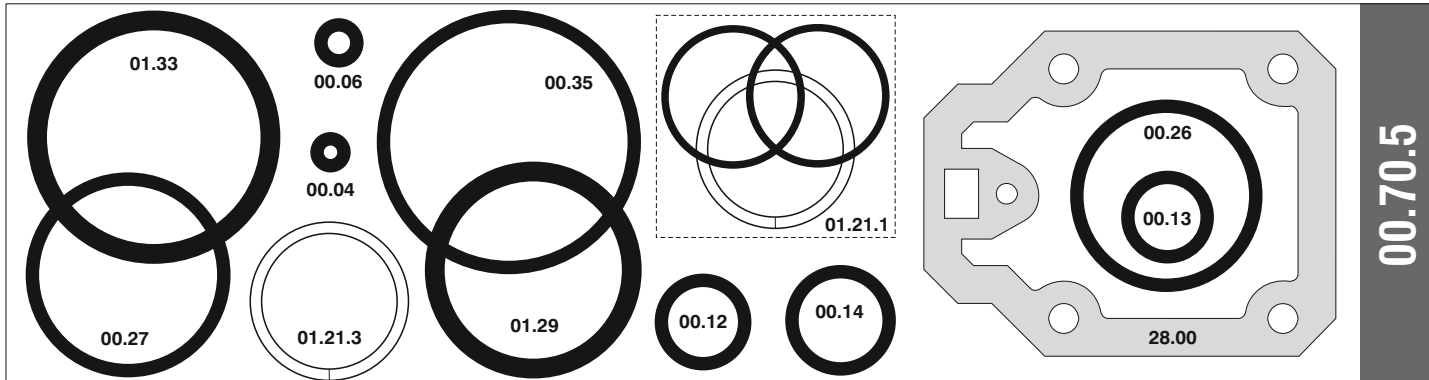
cod. 1156000DK

Parti di ricambio - Spare parts - Ersatzteile - Pièces de rechange - Piezas de repuesto  
Ανταλλακτικά - Partes sobresselentes - Wisselstukken - Reservedele



Cod.	Descrizione	Description	Cod.	Descrizione	Description	Cod.	Descrizione	Description
00.06	O-Ring	O-Ring	20.00-9	Corpo	Body	96.00.1	Kit caricatore disc.	Magazine disk Kit
00.12	O-Ring	O-Ring	22.07	Testa	Head	96.00-01	Tappo	Cap
00.13	O-Ring	O-Ring	24.00	Silenziatore	Silencer	96.00-021	Supporto	Support
00.14	O-Ring	O-Ring	25.04.9	Deflettore	Exhaust deflector	96.00-031	Caricatore dischi	Disk magazine
00.26	O-Ring	O-Ring	26.07.1	Cilindro	Cylinder	96.00-04	Spingidisco	Pusher
00.27	O-Ring	O-Ring	28.00	Guarnizione	Gasket	96.00-05	Molla	Spring
00.35	O-Ring	O-Ring	32.05	Ammortizzatore	Bumper	96.00-06	Leva	Latch
01.21.1	Guarnizione	Gasket	39.00	Guarnizione scarico	Exhaust gasket	96.00-07	Perno	Pin
01.29	O-Ring	O-Ring	40.04.3	Valvola completa	Valve ass'y	96.00-08	Molla	Spring
01.33	O-Ring	O-Ring	45.04	Anello valvola	Ring	96.00-09	Rullo molla	Roller
03.06	Vite	Screw	54.03	Pulsante	Trigger valve	96.00-10	Tubo	Tube
04.00	Dado	Nut	55.06	Raccordo	Bush	96.00-111	Alimentatore dischi	Disk feeder
04.06.1	Vite	Screw	70.02.9K	Supporto bilanciere	Tool hangers	96.00-12	Pistone	Piston
04.06.5	Vite	Screw	70.04	Protezione	Guard	96.00-13	Piastra	Plate
04.10	Vite	Screw	72.03.3	Reggicaricatore	Support	96.00-14	Anello	Ring
04.12	Vite	Screw	74.09	Piastrina	Plate	96.00-15	Anello	Ring
04.16	Vite	Screw	76.04	Perno	Pin	96.00-16	Anello elastico	Elastic ring
04.16.2	Vite	Screw	76.14	Perno	Pin	96.00-17	Anello	Ring
04.18	Vite	Screw	76.45	Perno molla	Pin	21.09.80	Battente	Driver
04.20	Vite	Screw	80.08	Grilletto chiusura	Trigger	53.00.80	Caricatore	Magazine
04.35	Vite	Screw	81.09	Grilletto comando	Trigger	62.00.80	Carrello	Slider
05.00	Dado	Nut	81.15	Controgrilletto	Safety	70.00.80	Spingipunto	Pusher
07.05	Sfera	Ball	90.07	Molla	Spring	81.04.80	Controtestina	Nose
07.25	Chiave esagonale	Hex. bar wrench	90.10	Molla	Spring	91.09.80	Testina	Nose plate
07.30	Chiave esagonale	Hex. bar wrench	91.03X	Molla	Spring	D01	Bocchetta olio	Oiler
09.02	Anello elastico	Elastic ring	92.01X	Molla	Spring			
17.30.1	Attacco	Connection	93.02	Molla	Spring			

Guarnizioni - O-Rings - Dichtungen - Joints - Kit O-rings - Λαστιχακια - Kit O-rings - O-ringen - Pakninger



80.16 DK

cod. 1156000DK

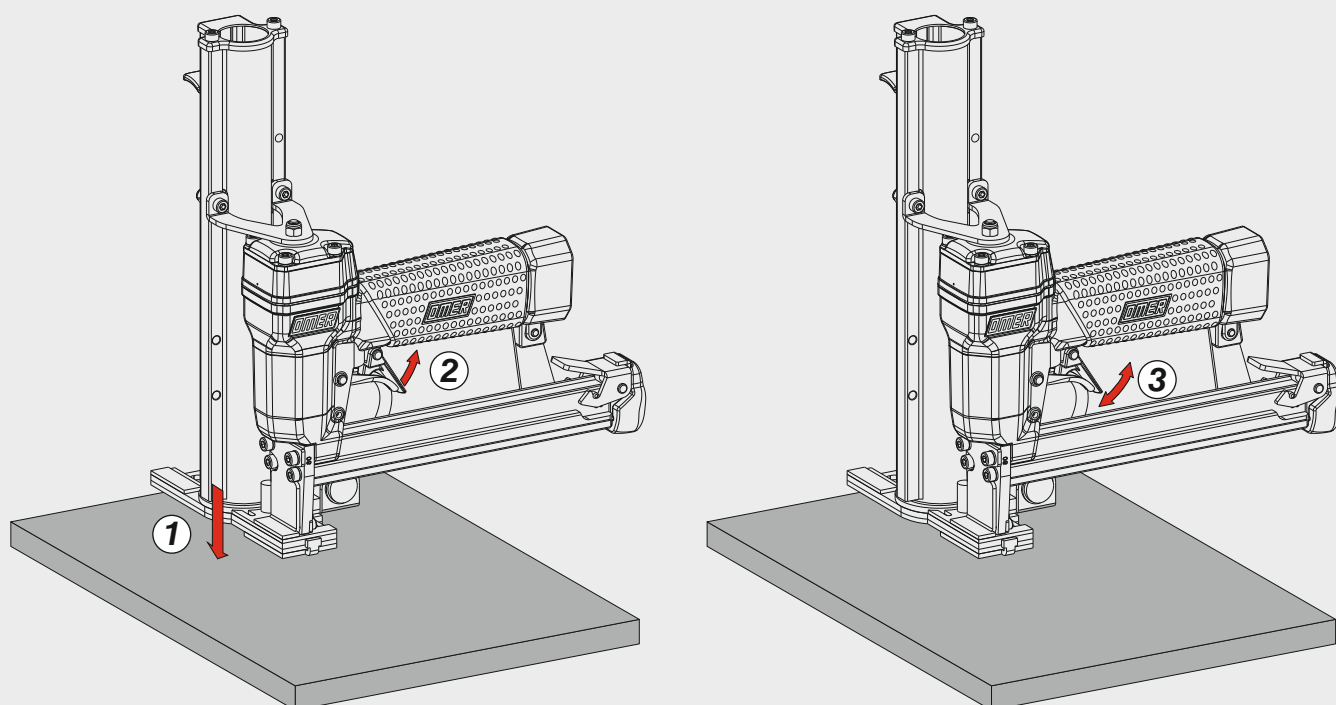
Indice di modifica  
Upgrade number

5

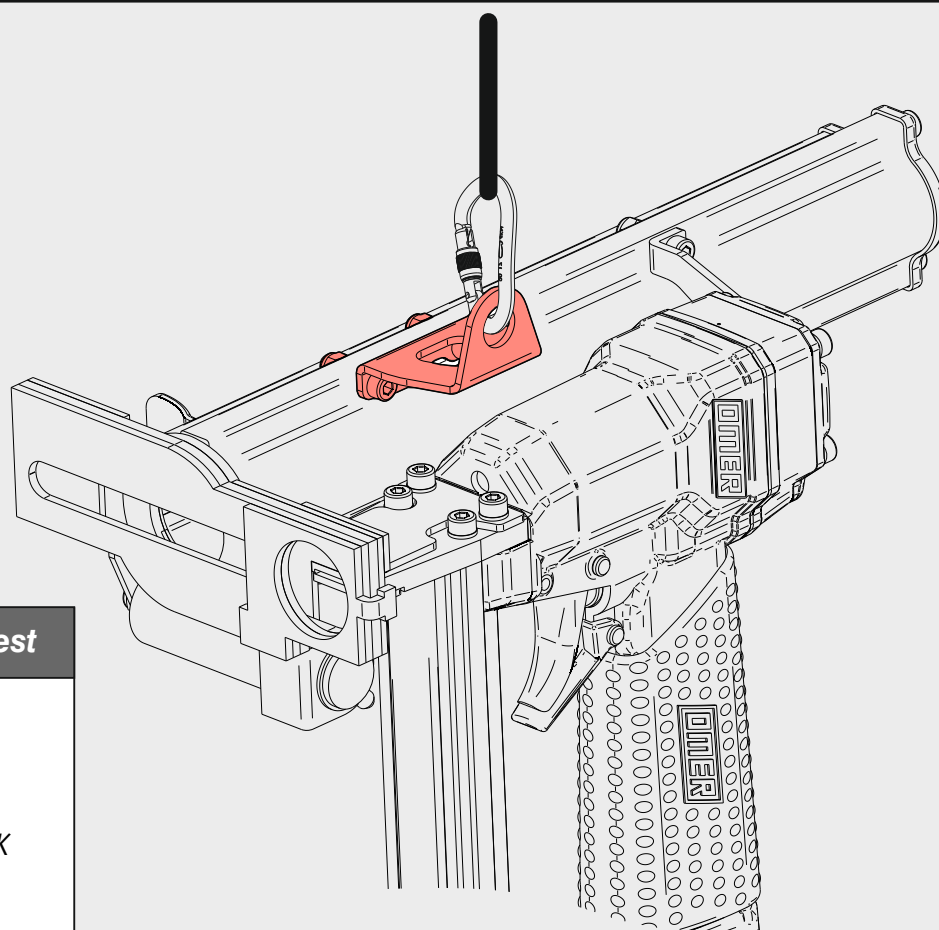
## Azionamento - Actuation

### Azionamento singolo con doppia attivazione

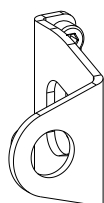
Single actuation with dual activation



## Supporto bilanciere - Tool hangers



A richiesta - On request



70.02.9K